

Serie "Traino veloce"  
"Fast Running" series

## CM 271

**Gru idraulica a montaggio rapido**  
*Hydraulic crane with quick assembling*  
**Grue hydraulique à montage rapide**  
*Hydraulischer Schnellmontagekran*  
**Grúa hidráulica de montaje rápido**



EN 14439 C25

DIN 15018-H1/B3

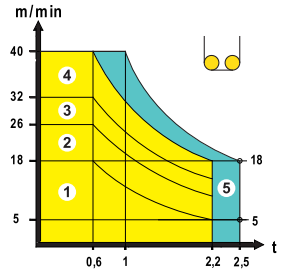
PROGETTO e COSTRUZIONE / DESIGN and CONSTRUCTION:  
LUIGI CATTANEO S.p.A



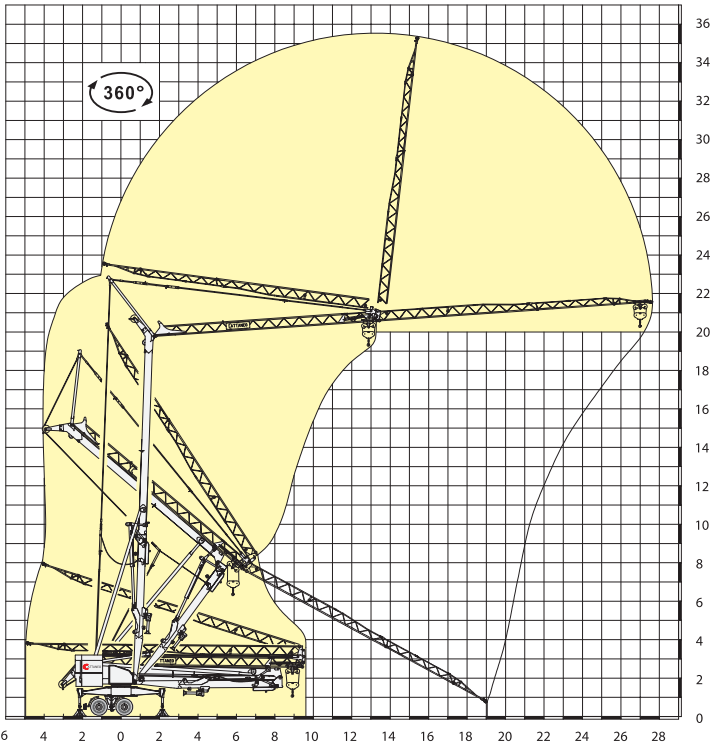
## Prestazioni - Performances - Prestations - Leistungen - Prestaciones

Icona	kVA	230V - 50Hz (3 kVA) 1 4,5 kVA 2			230V - 50Hz (6 kVA) 3 400V - 50Hz 10 kVA 4				
		1°	2°	3°	1°	2°	3°		
Inverter	7,5/1400	m/min	5	18 (12)	26 (18)	m/min	5	18 (12)	40 (32)
		kg	2.200	1.000	600	kg	2.200	2.200	600
Inverter	2,2/1400	m/min	5	18	40	m/min	5	18	40
		kg	2.200	2.200	600	kg	2.200	2.200	600
Inverter (*)	2,2/1400	m/min 20 - 35			m/min 20 - 40				
Inverter	2,2/1400	g/min			0,4 - 0,9				

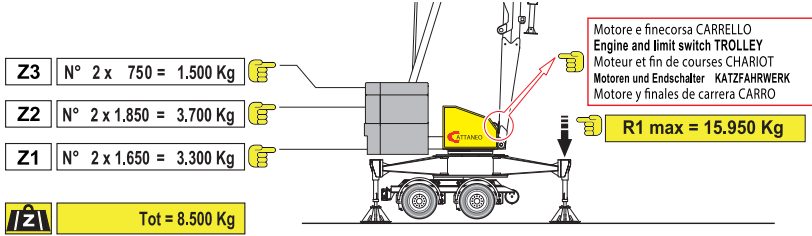
Icona	kVA	400V - 50Hz 12 kVA 5				
		1°	2°	3°	4°	
Inverter	7,5/1400	m/min	5	18	30	40
		kg	2.500	2.500	1500	1000
Inverter	3/1400	m/min 25 - 50				
Inverter	2,2/1400	g/min 0,4 - 0,9				



## Montaggio - Erection - Montage - Montage - Montage

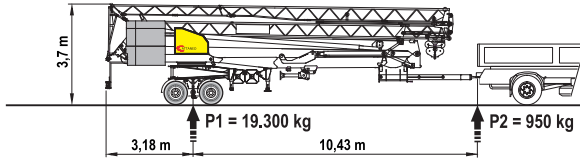
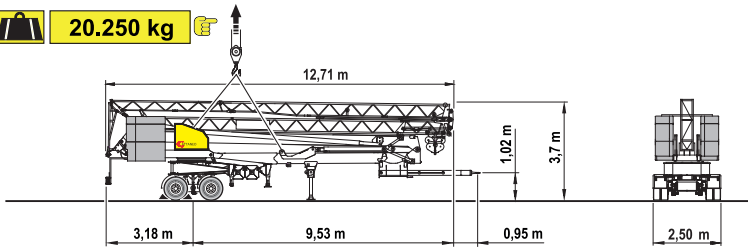


## Contrappeso in lastre di cemento armato - Ferro-concrete ballast slabs Contrepoids en plaques de béton armé - Gegengewicht aus Betonplatten - Lastre en hormigón armado



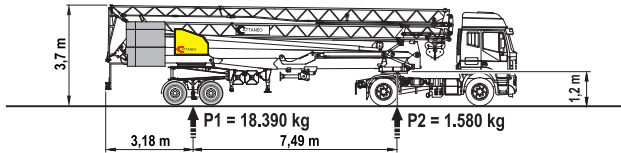
### Trasporto - Transport - Transport - Transport - Transporte

**20.250 kg**



**25 km/h**

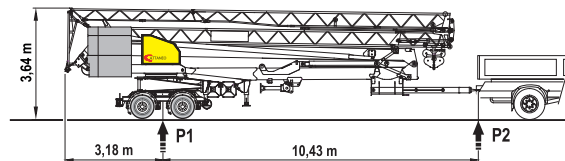
ABE (TUV) § 20-22 StVZO



**25 km/h**

ABE (TUV) § 20-22 StVZO

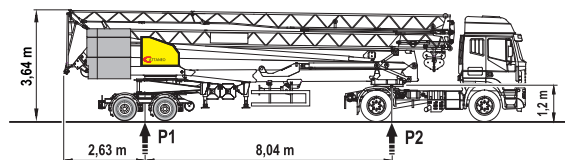
**S020**



Offroad	km/h	P1	P2
<b>S020</b>	80	19.910	950 kg

ABE (TUV) § 20-22 StVZO

**S020**



Offroad	km/h	P1	P2
<b>S020</b>	80	17.900	2.780 kg

Dir. 2007/46/CE